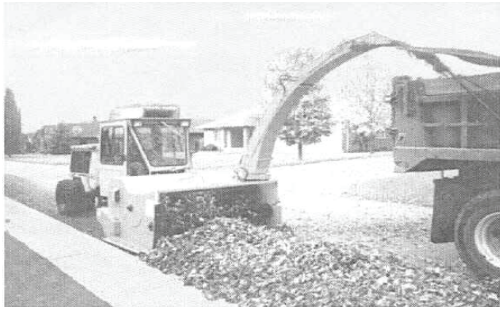


The City of Hillsboro's leaf pick-up program helps reduce flooding caused by leaves clogging the storm drains

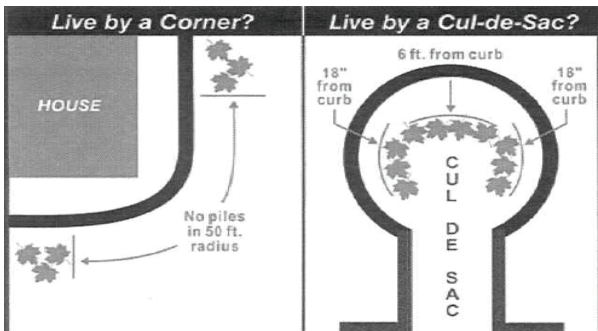


Leaf Drop **NEW** Location/Dates:
Mooberry Elementary School
1230 NE 10th Ave

City residents only
No contractors

9:30am - 3:30pm
 Saturday, November 20th
 Saturday, December 18th
 Saturday, January 15th

Canned food donations for the Food Bank will be accepted on the leaf drop days.



Please follow these guidelines to increase program efficiency:

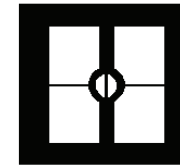
- Loose leaves are preferred. If bagged, use paper, biodegradable bags. **Plastic bags will not be picked up.**
- Pile leaves, windrow fashion, in the street, leave a minimum of 18" between the curb and the leaf piles to allow storm water to drain.
- Keep piles less than 3 feet high.
- Leaves only.....**yard debris, sticks, grass clippings, construction debris and/or garbage will not be picked up.*****Use your yard debris bin for yard debris and grass clippings.**
- Do not block mailboxes in order to avoid delay in mail delivery.
- Do not block intersections with leaves.
- Remove or turn basketball hoops and other obstructions.
- Move vehicles from the area during your scheduled week. Leaf piles cannot be picked up if vehicles are within 10 feet of pile.

Emergencies, severe winter weather, or light or extremely heavy leaf fall may cause the crew to get off schedule. However, we will attempt to follow the schedule as much as possible.

- * Leaves are composted for field application. Yard debris and garbage are not appropriate for this program.
- * Construction debris causes expensive damage to the equipment.

Questions - call
 503-615-6509

Recorded information 503-681-6445
www.ci.hillsboro.or.us



City of Hillsboro
2010
Free Curbside Leaf
Pick-up

2010 Pick-up Schedule
Leaves should be at the street several days before your scheduled area.

Please note new order of areas

<u>Area</u>	<u>Dates</u>
1	Nov 2- Nov 5 & Dec 9-Dec 14
2	Nov 5-Nov 10 & Dec 14 - Dec 17
6	Nov 10-Nov 16 & Dec 17 - Dec 22
7	Nov 16-Nov 19 & Dec 22 -Dec 28
3	Nov 19 - Nov 24 & Dec 28 - Jan 3
8	Nov 24-Dec 1 & Jan 3 - Jan 6
5	Dec 1 - Dec 6 & Jan 6 - Jan 11
4	Dec 6 -Dec 9 & Jan 11 - Jan 14

Specialized areas may be coordinated separately.

Check the local paper and City website for scheduling changes.

No Pick Up On Holidays:
 Nov 11th - Veterans Day
 Nov 25th - Thanksgiving
 Dec 24th - Christmas
 Dec 31st - New Years