

The City of Hillsboro's street tree leaf pick-up program helps reduce flooding caused by leaves clogging the storm drains.

Help us improve our efficiency:

- **Street tree leaves only.** Leaves from your yard trees need to go in your yard debris bin.
- **Loose leaves are preferred.**\* If bagged, **use paper biodegradable bags.** Plastic bags will not be picked up.
- **Leaves only, please....yard debris, sticks, grass clippings, construction debris and/or garbage won't be picked up.\***
- Pile leaves, windrow fashion, in the street, leaving a minimum of 18" between the curb and leaf piles to allow storm water to drain.
- Keep piles less than 3 feet high.
- Don't block mailboxes, intersections or cul-de-sacs.
- Remove or turn basketball hoops and other obstructions that extend beyond the curb.
- Keep the parking lane free of vehicles during your scheduled week.

\* *Leaves are composted for field application. Yard debris, garbage and construction debris are not appropriate for this program and could damage expensive equipment.*

Emergencies, severe weather, or light or extremely heavy leaf fall may cause the crew to get off schedule. We will attempt to follow the schedule as much as possible.

## **Street Tree Leaf Drop-off Location**

Fairground Sports Complex on  
28th Ave, next to the tennis courts

9:30am - 3:30pm  
Saturday, November 19th  
Saturday, December 17th  
Saturday, January 14th

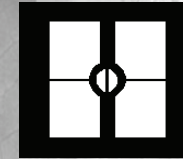
We are also offering a street tree leaf drop-off location again this year for City residents who can bring bagged leaves to the drop-off location.

## **Canned food donations for the Oregon Food Bank will be Accepted again this year**

Due to the success of our can food drive last year, we will be collecting can food donations again this year at the leaf drop-off location on the drop-off days.

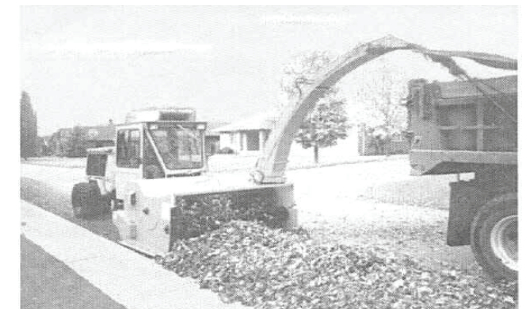


Questions - call  
503-615-6509  
Recorded information 503-681-6445  
[www.ci.hillsboro.or.us](http://www.ci.hillsboro.or.us)



City of Hillsboro  
Public Works

## **2011 Curbside Street Tree Leaf Pick-up Program**



Unlike many cities in Washington County, Hillsboro has a curb-side street tree leaf pick-up program. Our leaf program keeps our streets clean, our storm sewer system operational and helps recycle leaves. Keep this schedule handy, so you will be ready for the leaf pick-up on your street and to help us be efficient with this program.