

PARKING MAXIMUM MAP

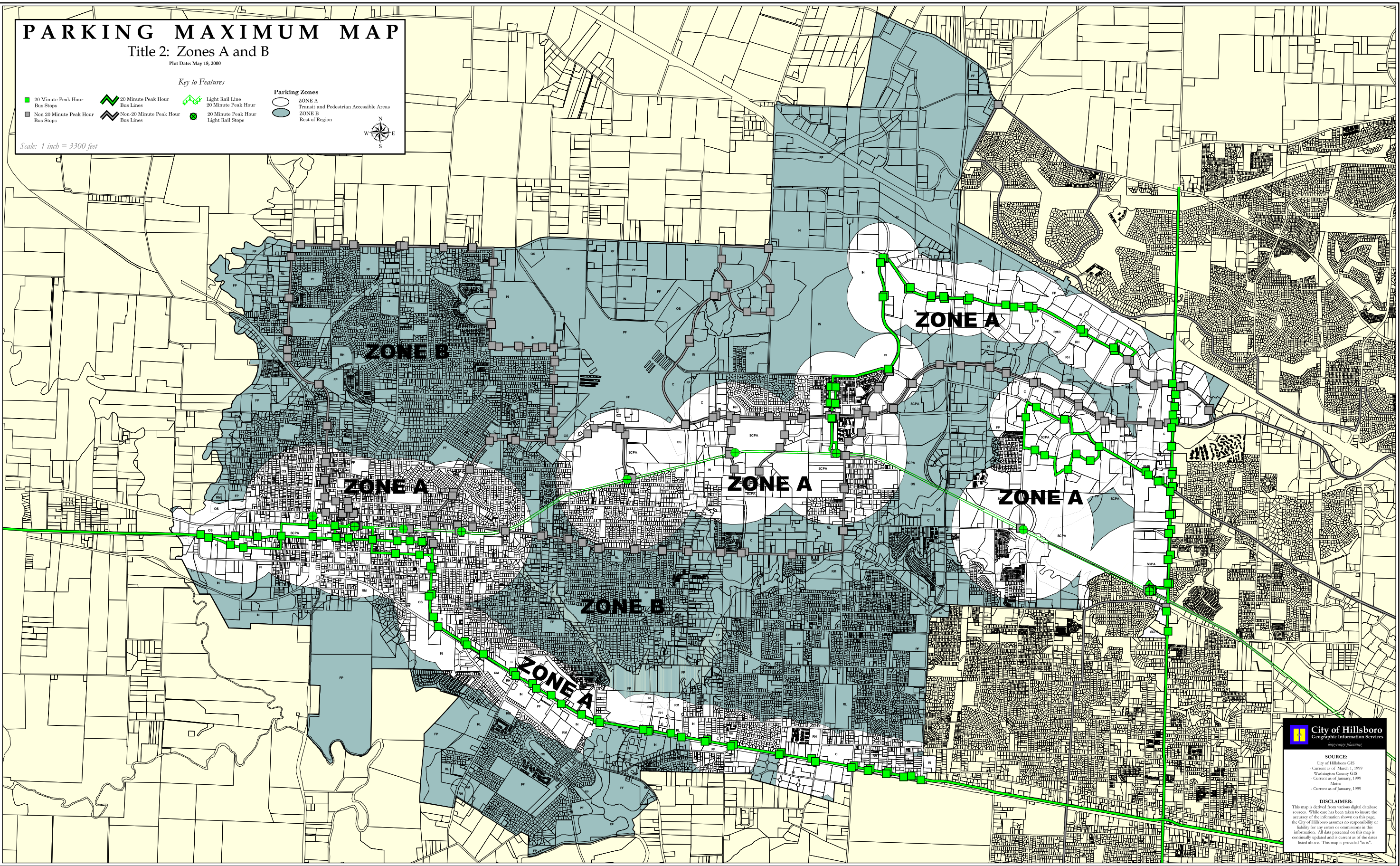
Title 2: Zones A and B

Plot Date: May 18, 2000

Key to Features

20 Minute Peak Hour Bus Stops	20 Minute Peak Hour Bus Lines	Light Rail Line	Parking Zones
Non 20 Minute Peak Hour Bus Stops	Non 20 Minute Peak Hour Bus Lines	20 Minute Peak Hour Light Rail Stops	ZONE A Transit and Pedestrian Accessible Areas
			ZONE B Rest of Region

Scale: 1 inch = 3300 feet



City of Hillsboro
Geographic Information Services
Progress Through Planning

SOURCE:
City of Hillsboro GIS
- Current as of March 1, 1999
Washington County GIS
- Current as of January, 1999
Metro
- Current as of January, 1999

DISCLAIMER:
This map is derived from various digital database sources. While care has been taken to insure the accuracy of the information shown on this page, the City of Hillsboro assumes no responsibility or liability for any errors or omissions in this information. All data presented on this map is continually updated and is current as of the dates listed above. This map is provided "as is".