

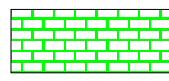
Title 4: Major Retail Use Restrictions Map

Scale: 1" = 0.663 miles

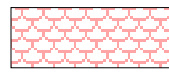
Plot Date: June 20th, 2001



Legend



Industrial Area (Major Retail Uses Prohibited)



Employment Area (Major Retail Uses prohibited/subject to regulations & conditions)



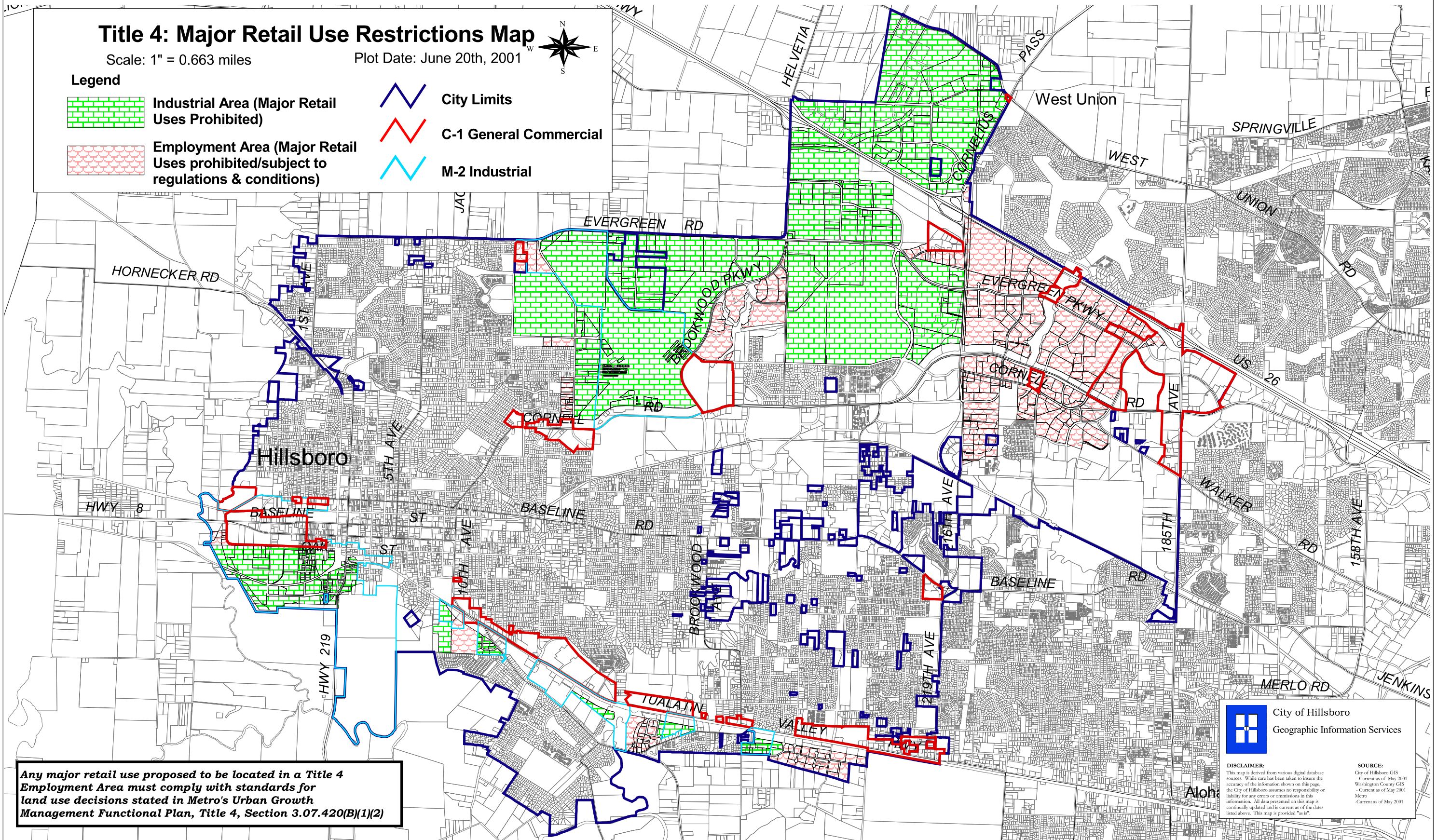
City Limits



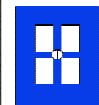
C-1 General Commercial



M-2 Industrial



Any major retail use proposed to be located in a Title 4 Employment Area must comply with standards for land use decisions stated in Metro's Urban Growth Management Functional Plan, Title 4, Section 3.07.420(B)(1)(2)



City of Hillsboro
Geographic Information Services

DISCLAIMER:
This map is derived from various digital database sources. While care has been taken to insure the accuracy of the information shown on this page, the City of Hillsboro assumes no responsibility or liability for any errors or omissions in this information. All data presented on this map is continually updated and is current as of the dates listed above. This map is provided "as is".

SOURCE:
City of Hillsboro GIS - Current as of May 2001
Washington County GIS - Current as of May 2001
Metro - Current as of May 2001