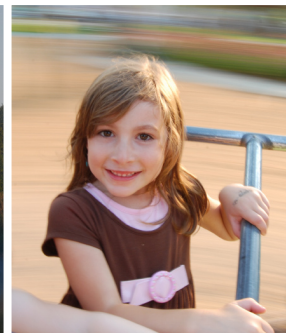




CITY OF HILLSBORO  
Parks & Recreation

Approved Plan | February 2010

SUBMITTED BY



# City of Hillsboro

Parks & Trails Master Plan and Natural Resource Analysis



# **ACKNOWLEDGEMENTS**

We would like to thank the many citizens, staff, and community groups who provided extensive input for the development of this Parks & Recreation Master Plan Update. The project was a true community effort, anticipating that this plan will meet the needs and desires of all residents of our growing city.

## **City Council**

Jerry Willey, Mayor

Ed Dennis

Nenice Andrews

Aron Carleson

Doug Johnson

Olga Acuña

Mike Castillo

## **Parks & Recreation Commission**

Darell Lumaco, Chair

Ken Edwards

Julie Karlbom

Gwynne Pitts

Jay Leo

Oscar Monteblanco

Chris Mannen

## **City Staff**

Steve Greagor, Director

Justin Patterson, Assistant Director

Kevin Smith, Development Manager

Mary Ordal, Project Manager

Gary Wilson, Facilities Manager

Ken Pipher, Management Analyst

Sue Boucher, Recreation Services Manager

Maegan Jossy, Recreation Program Supervisor

Shelah Jett, Senior Center Director

Corinne Bloomfield, Community Resources Manager

Steve Heldt, Maintenance Superintendent

Sean Morgan, Cultural Arts Program Manager

## Consultant Team



**MIG, Inc.**  
**815 SW 2nd Avenue, Suite 200**  
**Portland, Oregon 97204**

# TABLE OF CONTENTS

1. INTRODUCTION .....	1
Planning Process.....	1
Community Engagement .....	3
Benefits of Parks and Recreation.....	4
Planning Context .....	5
2. HILLSBORO IN 2009 .....	9
Community Growth and Change.....	9
Parks and Recreation Services.....	10
Parks and Recreation Facilities .....	11
Recreation Programs .....	23
Park Maintenance.....	28
3. PARKS AND RECREATION NEEDS .....	29
Park Land Needs.....	29
Greenway and Open Space Needs .....	41
Trail Needs.....	42
Recreation Facility Needs.....	45
Recreation Program Needs.....	50
Maintenance Needs .....	52
4. PARKS, TRAILS AND FACILITIES .....	55
Parks.....	55
Trails .....	67
Recreation Facilities .....	71
5. RECREATION PROGRAMS.....	77
Core Program Areas.....	77
Service Provision Role .....	78
Recommendations .....	79
6. MAINTENANCE .....	85
Maintenance Classification.....	85
Traditional Park Maintenance.....	87
Natural Areas .....	90
Trails .....	94
7. IMPLEMENTATION.....	97
Capital Improvements .....	97
Funding Sources .....	99
Measuring Success.....	103
Summary.....	104

## BIBLIOGRAPHY

### MAPS

Map 1: Existing Parks & Facilities.....	15
Map 2: Existing Regional Trails & Greenways .....	17
Map 3: Community Park Service Areas .....	37
Map 4: Neighborhood Park & Elementary School Service Areas.....	39
Map 5: Acquisition & Development Areas.....	63
Map 6: Proposed Trails & Greenways .....	69

### FIGURES

Figure 1.1: Planning Process
Figure 6.1: Developed Park with Natural Features
Figure 6.2: Integrated Developed Areas and Natural Resources

### LIST OF TABLES

Table 2.1: Park Land Summary
Table 2.2: Undeveloped Park Land Summary
Table 2.3: Greenways and Open Space Summary
Table 2.4: Other Sites Summary
Table 2.5: Outdoor Athletic Facilities Summary
Table 2.6: Picnic Facilities Summary
Table 2.7: Indoor Facilities Summary
Table 2.8: Program Participation for Reported Annual Participants - FY 2007/08
Table 2.9: Hillsboro Parks & Recreation Revenue Sources - FY 2007/2008
Table 4.1: Design Guidelines
Table 4.2: Park Improvement Recommendations
Table 6.1: Natural Resource Management Concepts
Table 7.1: Future Project Anticipated Costs
Table 7.2: Revenue Generated for Capital Development— FY 2004-2009

### APPENDICES

Appendix A: Relevant Recent Planning Efforts
Appendix B: Park Inventory by Classification
Appendix C: Hillsboro School District Facility Inventory
Appendix D: Invasive Species Summary
Appendix E: Organizational Structure
Appendix F: Urban Growth Boundary Expansion Areas
Appendix G: Assumptions