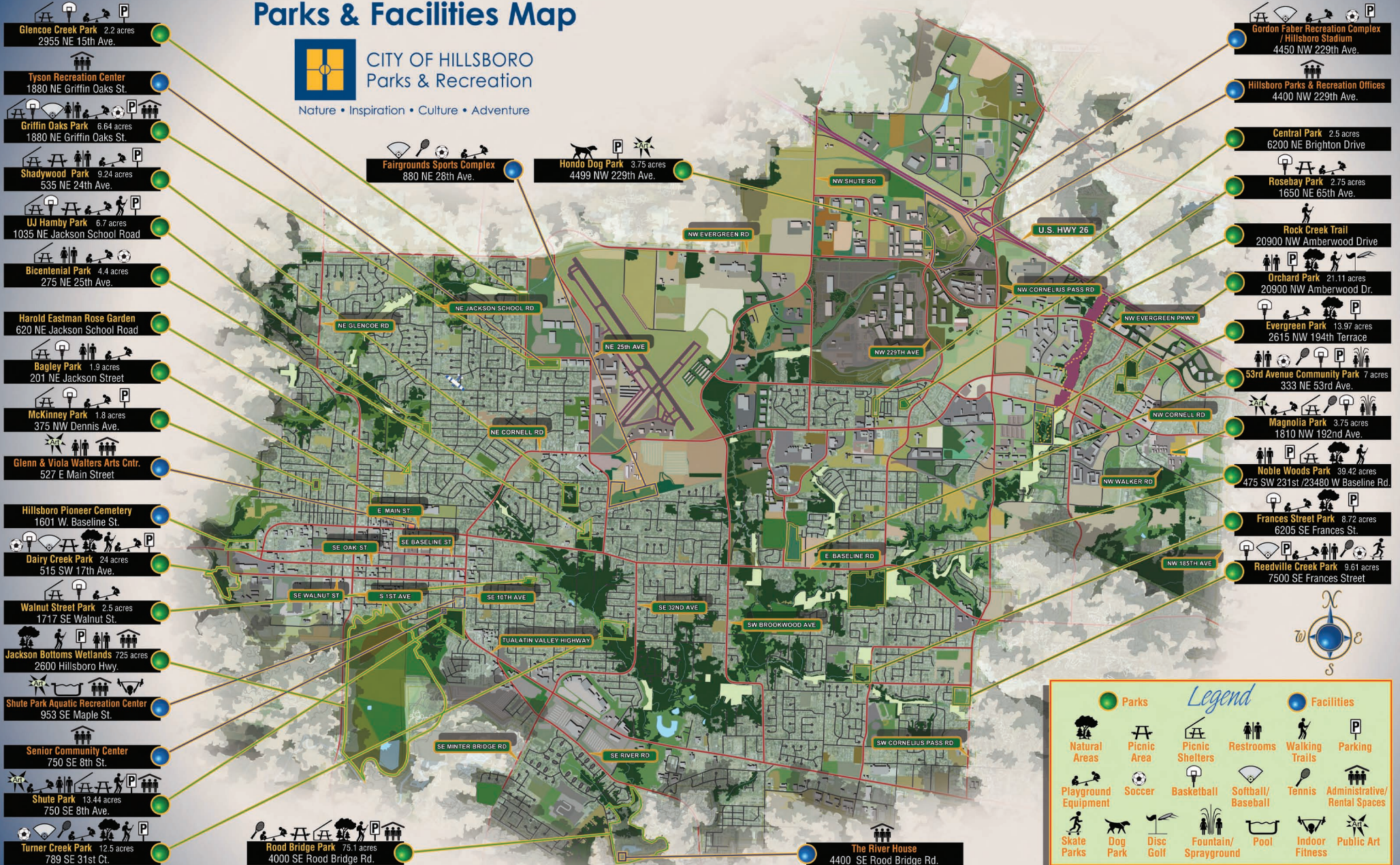


Parks & Facilities Map



CITY OF HILLSBORO
Parks & Recreation

Nature • Inspiration • Culture • Adventure



Glencoe Creek Park 2.2 acres
2955 NE 15th Ave.

Tyson Recreation Center
1880 NE Griffin Oaks St.

Griffin Oaks Park 6.64 acres
1880 NE Griffin Oaks St.

Shadywood Park 9.24 acres
535 NE 24th Ave.

UJ Hamby Park 6.7 acres
1035 NE Jackson School Road

Bicentennial Park 4.4 acres
275 NE 25th Ave.

Harold Eastman Rose Garden
620 NE Jackson School Road

Bagley Park 1.9 acres
201 NE Jackson Street

McKinney Park 1.8 acres
375 NW Dennis Ave.

Glenn & Viola Walters Arts Cntr.
527 E Main Street

Hillsboro Pioneer Cemetery
1601 W. Baseline St.

Dairy Creek Park 24 acres
515 SW 17th Ave.

Walnut Street Park 2.5 acres
1717 SE Walnut St.

Jackson Bottoms Wetlands 725 acres
2600 Hillsboro Hwy.

Shute Park Aquatic Recreation Center
953 SE Maple St.

Senior Community Center
750 SE 8th St.

Shute Park 13.44 acres
750 SE 8th Ave.

Turner Creek Park 12.5 acres
789 SE 31st Ct.

Rood Bridge Park 75.1 acres
4000 SE Rood Bridge Rd.

Fairgrounds Sports Complex
880 NE 28th Ave.

Hondo Dog Park 3.75 acres
4499 NW 229th Ave.

Gordon Faber Recreation Complex / Hillsboro Stadium
4450 NW 229th Ave.

Hillsboro Parks & Recreation Offices
4400 NW 229th Ave.

Central Park 2.5 acres
6200 NE Brighton Drive

Rosebay Park 2.75 acres
1650 NE 65th Ave.

Rock Creek Trail
20900 NW Amberwood Drive

Orchard Park 21.11 acres
20900 NW Amberwood Dr.

Evergreen Park 13.97 acres
2615 NW 194th Terrace

53rd Avenue Community Park 7 acres
333 NE 53rd Ave.

Magnolia Park 3.75 acres
1810 NW 192nd Ave.

Noble Woods Park 39.42 acres
475 SW 231st / 23480 W Baseline Rd.

Frances Street Park 8.72 acres
6205 SE Frances St.

Readville Creek Park 9.61 acres
7500 SE Frances Street

The River House
4400 SE Rood Bridge Rd.

Legend

Parks			Facilities		